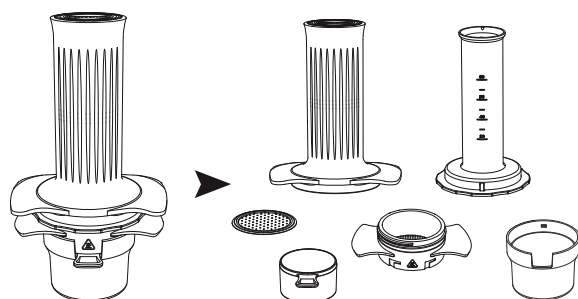
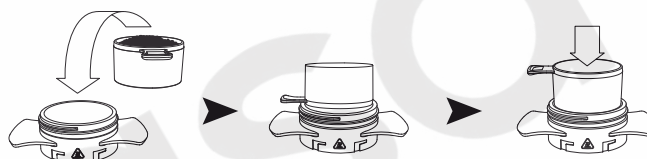


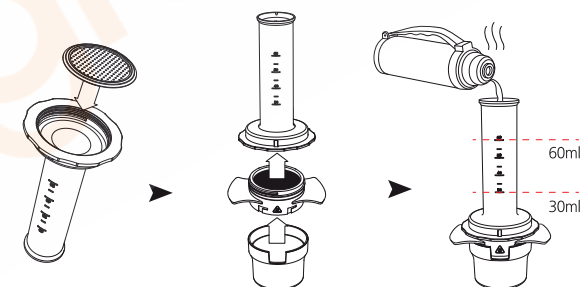
How to use Cafflano Kompresso



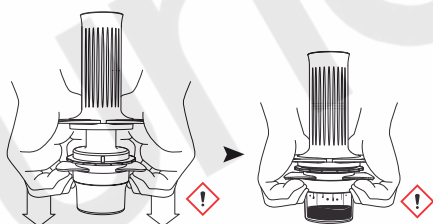
Complete product (when all parts are assembled).
Disassembled product



Scoop your ground beans with the tamping scoop (10g~15g) Put ground beans into Filter Basket and tamp them with the bottom face of Tamping Scoop



Assemble Shower Screen with Chamber Screw
Filter Basket fully into chamber to prevent leakage
Assemble Cup with Filter Basket. Pour Desired amount of hot water into Chamber while referring to the engraved scales.



Put Piston into Chamber, wait 5 ~ 10 sec for pre-infusion, then use both hands to press and squeeze the handle of piston and filter basket simultaneously. (9 bar of pressure is achieved when squeezing power reaches 55Kgf) Be cautious as hot steam may come out from air-vent while extracting espresso.



Dismantle Cup and enjoy fresh Espresso!